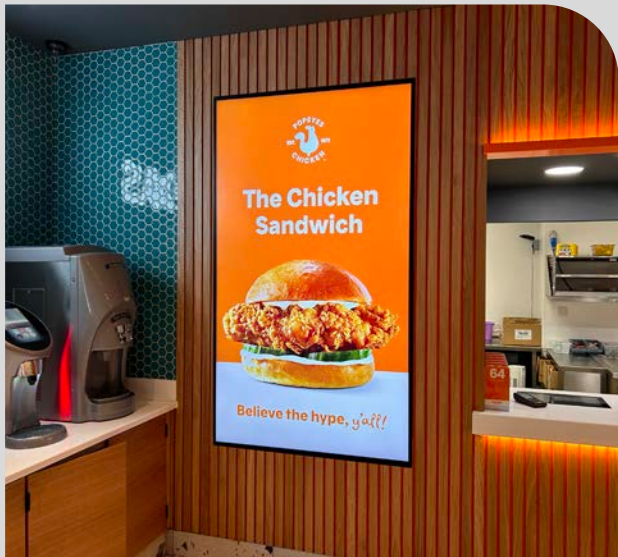


Digital Signage

Products and Solutions Catalogue



CONTENTS

Digital Signage Solutions **01**

Additional Services + Sustainability **02**

Industries **03**

Digital Posters **05**

Professional Monitors and Video Walls **07**

Window Displays **09**

Outdoor Displays **11**

Touch Screens **13**

Small Sized and Wide Format Displays **15**

Media Players **17**

Direct View LED **19**

Content Management System **21**

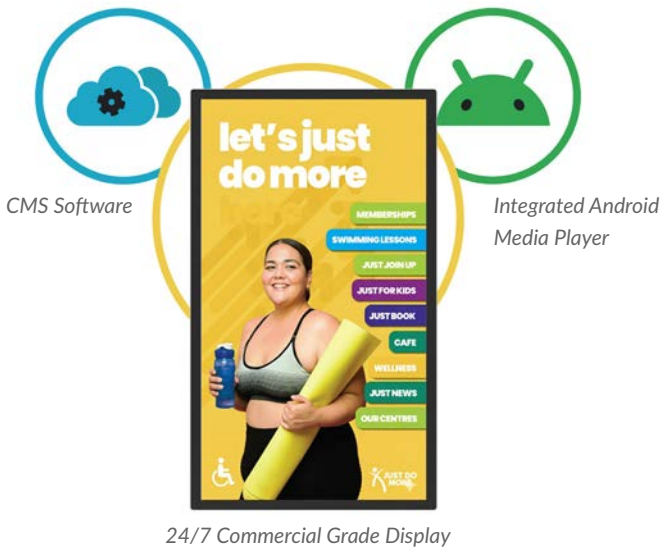
Digital Signage Solutions

Integrated Digital Signage Solutions

Digital signage projects typically require a commercial display, a media player and a content management system (CMS) software platform. These requirements are usually sourced separately, which can create compatibility challenges and make installation, support, and maintenance more complex and costly, especially across larger networks.

To simplify this process, we've developed all-in-one solutions that combine 24/7 commercial displays with built-in media players alongside a powerful CMS software. All-in-one solutions are not only easier to sell, install, support and maintain but are also much more cost effective.

Using close to two decades of industry experience, we have developed a wide range of solutions that can be controlled either by using a simple USB plug and play method or our user-friendly online CMS software.



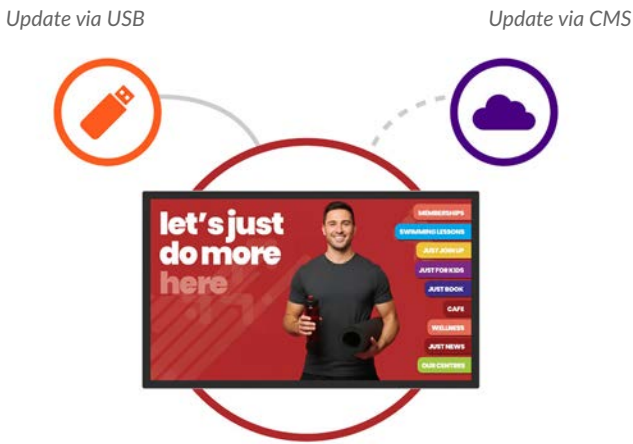
Plug and Play & Networked Solutions

All of our Android based non-interactive displays support simple USB plug and play. With this method, content is loaded onto a USB stick, inserted into the display, and automatically copied across. Once complete, the USB can be removed and content will play in a continuous loop with no technical knowledge required, making digital signage accessible to any business.

Plug-and-play solutions can be upgraded to a networked CMS platform at any point, providing a fully future-proof system. Once connected via Wi-Fi, Ethernet, or 4G, users can log in to a user-friendly online CMS portal to remotely update, control, and monitor displays from anywhere. Our CMS also supports the creation and management of interactive content for touch screens, providing a single platform for both standard and interactive projects.

For maximum flexibility, our hardware fully supports third-party CMS platforms, allowing seamless integration with existing software ecosystems or alternative content management solutions. For a full overview of available features, see page 21.

Our diverse digital signage portfolio offers a wide range of solutions designed to suit different environments, applications, and performance requirements. All compatible with our CMS platform for a fully integrated solution.



Wall Mounted Displays	Outdoor Displays	Stretched Displays	Freestanding Totem Displays
Battery Powered Displays	LCD Video Wall Displays	Commercial Grade AV Monitors	Touch Screens
DV-LED Video Wall Solutions	Window Displays	POS Displays	Media Players

Additional Services & Warranty

We've developed a comprehensive support system designed to make digital signage accessible to everyone. Our services include free consultancy, professional installation, CMS training sessions, practical tools such as our cost calculators to maximise the efficiency of your projects and maintenance services to ensure smooth deployment and operation at every stage. Combined with our free lifetime technical support, we provide everything needed to confidently plan, install, and manage digital signage solutions.

All hardware solutions come with a 3-year warranty, with 55" and larger models eligible for on-site warranty*, reflecting our commitment to long-term reliability. Whether you are new to digital signage or expanding an existing deployment, our services are designed to guide you every step of the way, from planning and installation to content management and ongoing maintenance, making digital signage simple and accessible for any user.



Sustainability Commitment

Sustainability is an important part of how we design, manufacture, and support our digital signage solutions. Many products include built-in energy-saving features to help reduce power consumption, and we prioritise the use of responsibly sourced, recycled materials where feasible, ensuring that product reliability and performance remain uncompromised.

Products are designed for constant long-term use, with robust construction and ongoing support helping to extend lifespan and reduce unnecessary waste. We are EEE registered, ensuring electrical and electronic equipment is disposed of responsibly in line with national regulations. Packaging is kept to a minimum, 100% recyclable and uses recycled materials wherever possible.

By prioritising durability, compliance, and responsible end-of-life processes, we aim to support a more sustainable digital signage market.



Industries

Retail

The retail sector is the most popular area for digital signage, with stores competing to capture customers’ attention in a highly competitive environment. Digital signage delivers up to 400% more views than static signage¹. Our portfolio offers a range of solutions for any retail need, including **Window Displays**, **Slimline Pro Advertising Displays**, interactive touch screens, and DV-LED Displays.



Indoor GOB DV-LED

Food and Drink

This sector is the fastest-growing area for digital signage, with large food chains benefiting from increased engagement. Digital signage has been shown to create a 31.8% uplift in overall sales volume¹. Our solutions range from **Slimline Pro Advertising Displays** with wipe-clean tempered glass fronts to cost-effective narrow bezel **Professional Advertising Displays**.



Professional Advertising Displays

Corporate

The integration and application of commercial display technology into the office spaces and meeting rooms continues to grow. The most obvious use for digital signage in corporate locations is in the boardroom, using **LCD** and **DV-LED Video Walls** as well as **4K Slim Bezel Interactive Touch Displays** as presentation tools. The use of digital signage for internal communication is another developing area that has proven to increase productivity by 20%-25%¹.



4K Slim Bezel Interactive Touch Displays

Healthcare

Digital signage is transforming the way that hospitals and healthcare facilities communicate with staff and patients. The **Android PCAP Touch Screens**, with edge-to-edge glass fronts, are ideal for wayfinding, healthcare information, and patient engagement, helping hospitals inform, engage and interact with their patients to improve overall care quality.



Professional Monitors

Hospitality

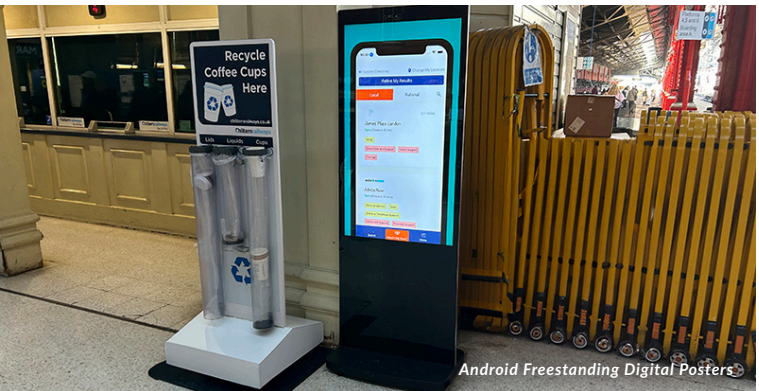
Hospitality settings such as hotels, resorts, nightclubs and catering venues have a captive audience looking for information, so they are a natural home for digital signage. Eye-catching displays, such as our elegant **Android Freestanding Digital Posters** and wall-mounted **Slimline Pro Advertising Displays**, can be used to boost customer satisfaction by 46%¹.



Android Freestanding Digital Posters

Transport

Transport hubs such as airports, train and bus stations, and even bus stops have become the most common places to encounter digital signage. Displays can provide real-time updates or advertise products, reaching up to 90% of passengers in train stations². Our solutions include **Professional Monitors**, **Android Freestanding Digital Posters**, **DV-LED**, and **LCD Video Walls**.



Android Freestanding Digital Posters

Education

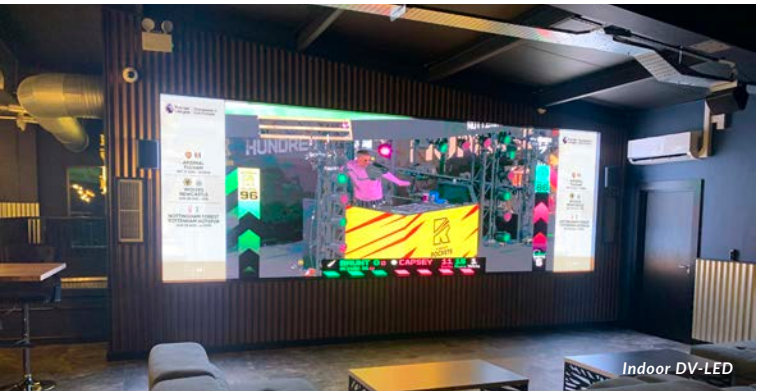
Schools, colleges, universities, and training facilities can leverage digital signage to improve learning experiences. The **4K Slim Bezel Interactive Touch Displays** are commonly used as interactive whiteboards, with 75% of teachers reporting increased student engagement³. **Slimline Pro Advertising Displays** also serve as digital notice boards for staff, students, and visitors.



4K Slim Bezel Interactive Touch Displays

Entertainment

Locations such as casinos, theatres, cinemas, zoos, concert halls and theme parks are perfect settings for digital signage. Use of commercial displays in these locations has been shown to increase average purchases by 29.5%¹. **Android Freestanding Digital Posters** can showcase any message, whether promotional or informational, while **LCD** and **DV-LED Video Walls** deliver an even bigger impact, creating truly memorable experiences.



Indoor DV-LED



Digital Posters



Slimline Pro Advertising Displays
19" | 22" | 32" | 43" | 50" | 55"

Premium displays that combine stunning tablet-like aesthetics with a robust protective enclosure and tempered glass face.

- Giant Tablet Styling
- Lightweight Design
- Toughened Safety Glass



Android Freestanding Digital Posters
50" | 55" | 65"

Show-stopping digital advertising totems with giant tablet styling.

- Giant Tablet Styling
- Internal Locker/AV Inputs
- Retractable Castors
- 4K Display (65" Model Only)



Vibrant Professional Advertising Displays
32" | 43" | 50" | 55"

Cost-effective package solution; vibrant 24/7 commercial grade displays with built-in network Android 14 media player and 1 year CMS software subscription.

- 800cd/m² Brightness
- Remarkable 4K Display*
- Anti-Glare 25% Haze Panel



Vibrant Superslim Freestanding Double-Sided Digital Posters
43" | 55"

Dual-sided advertising displays with incredibly slim depth and striking brushed aluminium frame.

- Different Content Both Sides**
- Premium Brushed Aluminium Finish
- Lightweight Design

	Slimline Pro Advertising Displays	Android Freestanding Digital Posters	Vibrant Professional Advertising Displays	Vibrant Superslim Freestanding Double-Sided Digital Posters
Screen Sizes	19" 22" 32" 43" 50" 55"	50" 55" 65"	32" 43" 50" 55"	43" 55"
Glass Tempered Front	✓	✓	✗	✗
Alluminium Surround	✓	✓	✗	✓
Retractable Castors	✗	✓	✗	✗
Brightness	19" & 22": 350cd/m ² 32"-55": 450cd/m ²	450cd/m ²	800cd/m ² *	700cd/m ² Both Sides
Double-Sided	✗	✗	✗	✓
Even Narrow Bezel	✗	✗	✓	✗
Internal Locker	✗	✓	✗	✗
Free Network Upgrade	✗	✗	✓	✗
Free 1 Year CMS Subscription	✗	✗	✓	✗
Free Wall Mount	✓	✗	✗	✗



4K Vibrant Professional Advertising Displays



Vibrant Superslim Freestanding Double-Sided Digital Posters



Android Freestanding Digital Posters

*32" is HD Resolution and 700cd/m² Brightness **Network Upgrade Required



Professional Monitors and Video Walls



Professional Monitors 32" | 43" | 50" | 55"

Adaptable 24/7 commercial grade AV monitor with simple digital signage media player.



Budget Friendly 24/7 Display



Built-in Video Matrix Processor



USB Playback



Economy Professional Monitors 43" | 55"

Budget-friendly 24/7 commercial grade 4K AV monitor.



Budget Friendly 24/7 Display



4K Resolution



Attach External Devices

	Professional Monitors	Economy Professional Monitors	4K Large Format Commercial Displays	LCD Video Wall Displays	Ultra-Narrow Bezel LCD Video Wall Displays
Screen Sizes	32" 43" 50" 55"	43" 55"	65" 75" 86" 98"	55"	55"
Bezel Size	Narrow	Narrow	Narrow	Super-Narrow	Ultra-Narrow
Brightness	450cd/m ²	350cd/m ²	450cd/m ²	500cd/m ²	500cd/m ²
Integrated Matrix Processor	✓	✗	✗	✓	✓
BNC Connection	✓	✗	✗	✗	✗
Resolution	1920x1080	3840x2160	3840x2160	1920x1080	1920x1080
4K Compatible	✗	✓	✓	✓	✓
Easy Install Handles	✗	✗	✓	✓	✓
Integrated Speakers	✓	✓	✓	✗	✗
USB Plug and Play	✓	✗	✓	✗	✗
Integrated Android Media Player	✗	✗	✓	✗	✗



4K Large Format Commercial Displays 65" | 75" | 86" | 98"

Ultra-high definition professional monitors with built-in Android media player.



Remarkable 4K Display



Lightweight Design



Integrated Android Media Player



LCD Video Wall Displays 55"

Go big using our 4K compatible video wall panels, with automatic tiling to fill any space.



4K Daisy Chain Tiling



Narrow Bezel (1.8mm Screen to Screen)



Easy Install Handles



Ultra-Narrow Bezel LCD Video Wall Displays 55"

The ultimate eye-catching solution that creates immersive experiences thanks to their near invisible 0.44mm even bezels.



4K Daisy Chain Tiling



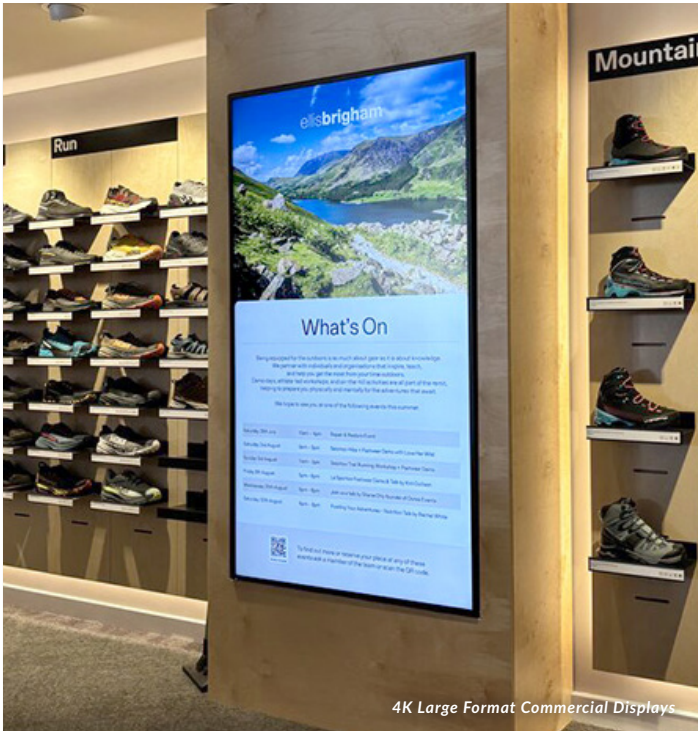
Narrow Bezel (0.88mm Screen to Screen)



Easy Install Handles



LCD Video Wall Displays



4K Large Format Commercial Displays



Window Displays



Ultra High Brightness Window Displays
43" | 49" | 55" | 65" | 75"

Designed for outward-facing window displays in direct sunlight.

- 3,500cd/m² Sunlight Readable
- Lightweight Enclosure
- Sleek Thin Bezel

	Ultra High Brightness Window Displays	Ultra High Brightness Hanging Double-Sided Displays	Vibrant Hanging Double-Sided Window Displays
Screen Sizes	43" 49" 55" 65" 75"	49" 55"	43" 55"
Brightness	3,500cd/m ²	Outside Facing: 3,500cd/m ² Inside Facing: 1,000cd/m ²	700cd/m ² Both Sides
Narrow Bezel	✓	✗	✗
Ultra Resistant to Blackening	✓	✓	✓
Double Sided	✗	✓	✓
Ceiling Mount Included	✗	✓	✓
Ambient Light Sensor	✓	✗	✗
Freestanding Option Available	✗	✓	✓



Ultra High Brightness Hanging Double-Sided Displays
49" | 55"

Maximise window displays by broadcasting content inwards and outwards, even in direct sunlight.

- 3,500cd/m² & 1,000cd/m² Sunlight Readable
- Different Content Both Sides*
- Ceiling Mount Included



Vibrant Hanging Double-Sided Window Displays
43" | 55"

Maximise window displays by broadcasting content inwards and outwards.

- 700cd/m² & 700cd/m² Brightness
- Different Content Both Sides*
- Super Slim Design

*Network Upgrade Required



Hanging Double-Sided Window Displays



Ultra High Brightness Hanging Double-Sided Displays



Ultra High Brightness Freestanding Double-Sided Digital Posters



Outdoor Displays



4K Elite Outdoor Advertising Displays

55" (Portrait Only)

A premium 4K outdoor display with high brightness, smart sensors, and the latest Android system for clear, reliable messaging in any environment.

- 3,500cd/m² Direct Sunlight Readable*
- Easy Front Maintenance
- IP56 Rated Enclosure



Outdoor Digital Advertising Displays

22" | 32" | 43" | 49" | 55" | 65"

Fully integrated stunning tablet-style displays; perfect for any weather conditions.

- 2,500cd/m² Direct Sunlight Readable*
- IP65 Rated Enclosure
- Touch Screen Version Available

*22" has a brightness of 2,000cd/m²



Outdoor Freestanding Digital Posters

43" | 49" | 55" | 65"

Stunning outdoor totems; perfect for any weather conditions.

- 2,500cd/m² Direct Sunlight Readable
- Vandal Proof
- Easy Front Maintenance

Outdoor Digital Android Battery A-Boards

43"

Fully portable solution ideal for any environment; display content all day and night on a single charge.

- Tempered Anti-Glare Glass
- IP65 Rated Enclosure
- 27 Hour Running Time
- 700cd/m² Brightness



High Brightness Outdoor Digital Android Battery A-Boards

43"

Sunlight readable and fully portable solution for any space; display content all day and night from a single charge.

- Tempered Anti-Glare Glass
- IP65 Rated Enclosure
- 27 Hour Running Time
- 1,500cd/m² Direct Sunlight Readable



	4K Elite Outdoor Advertising Displays	Outdoor Digital Advertising Displays	Outdoor Freestanding Digital Posters	Outdoor Digital Android Battery A-Boards	High Brightness Outdoor Digital Android Battery A-Boards
Screen Sizes	55"	22" 32" 43" 49" 55" 65"	43" 49" 55" 65"	43"	43"
Brightness	3,500cd/m²*	2,500cd/m²*	2,500cd/m²	700cd/m²	1,500cd/m²
IP65 Rating	IP56	IP65	IP65	IP65	IP65
Display Resolution	4K (3840x2160px)	HD / 4K** (1920x1080px / 3840x2160px)	HD / 4K** (1920x1080px / 3840x2160px)	HD (1920x1080px)	HD (1920x1080px)
Ambient Light Sensor	✓	✓	✓	✓	✓
Glass Treatment	Anti-Reflective	Anti-Reflective	Anti-Reflective	Anti-Glare	Anti-Glare
Easy Front Maintenance	✓	✗	✓	✗	✗
Free Wall Mount	✓	✓	✗	✗	✗
Removable Base	✗	✗	✓	✗	✗
Portable	✗	✗	✗	✓	✓
Internal Locker	✓	✓	✓	✗	✗
Touch Screen Version Available	✗	✓	✓	✗	✗
Battery Powered Display	✗	✗	✗	✓	✓
Battery Running Time	✗	✗	✗	27 Hours	27 Hours



Outdoor Digital Advertising Displays



Outdoor Freestanding Digital Posters



Outdoor Digital Android Battery A-Boards

**49", 55" and 65" have a 4K Resolution

Android PCAP Touch Screens



PCAP Touch Screen Monitors



Touch Screens



Android PCAP Touch Screens
22" | 32" | 43" | 50" | 55"

Perfect for interactive experiences, such as wayfinding and product browsing.

- Giant Tablet Styling
- Free Wall Mount
- Integrated Android Media Player



PCAP Touch Screen Monitors
22" | 32" | 43" | 50" | 55"

Interactive touch solution with open frame and integrated Windows options available; ideal for kiosk integration or wall-mounted applications.

- Optional Open Frame Bracket Included
- Optional Integrated Windows OPS PC
- Attach External Devices



Android PCAP Touch Screen Kiosks
43" | 50" | 55"

Fully integrated kiosk solution featuring rear ports and connections for use with built-in or third party PC.

- All in One Touch Kiosk
- Integrated Android Media Player
- Internal Locker



PCAP Self Service Kiosks
22" | 27"

Self-ordering touch screen solution for quick service restaurants with integrated QR code scanner and receipt printer.

- Easy Roll Replace
- Built-In Windows PC
- Anti-Theft Mounting Options
- Additional Mounting Solutions



Freestanding PCAP Touch Screen Posters
50" | 55"

Commercial touch totems with giant tablet styling; perfect for creating interactive experiences.

- Giant Freestanding Tablet
- Integrated Android Media Player
- Internal Locker
- Retractable Castors



4K Slim Bezel Interactive Touch Displays
65" | 75" | 86"

Interactive whiteboard solution for meeting rooms with integrated annotation and mirroring software.

- 4K 4K Display
- Optional OPS Windows PC
- Optional Smart Pen Stylus

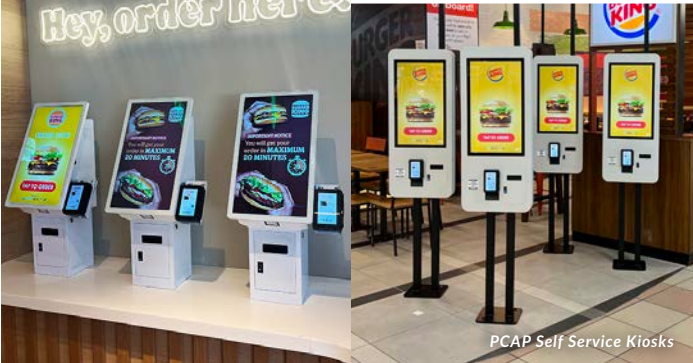
	Android PCAP Touch Screens	PCAP Touch Screen Monitors	Android PCAP Touch Screen Kiosks	PCAP Self Service Kiosks	Freestanding PCAP Touch Screen Posters	4K Slim Bezel Interactive Touch Displays
Screen Sizes	22" 32" 43" 50" 55"	22" 32" 43" 50" 55"	43" 50" 55"	22" 27"	50" 55"	65" 75" 86"
Touch Points	10	10	10	10	10	20
Touch Technology	PCAP	PCAP	PCAP	PCAP	PCAP	Infrared
Operating System	Android	Windows (Optional OPS PC)	Android / Windows (Optional OPS PC)	Windows	Android	Android
Optional OPS PC	✗	✓	✓	✓	✗	✓
Internal Locker	✗	✗	✓	✓	✓	✗
Mounting	Wall Mounted	Wall Mounted/ Open Frame	Freestanding	Wall Mounted/ Freestanding/ Tabletop*	Freestanding	Wall Mounted
Integrated Printer and Scanner	✗	✗	✗	✓	✗	✗
Wireless Mirroring and File Sharing	✗	✗	✗	✗	✗	✓



Android PCAP Touch Screen Kiosks



Freestanding PCAP Touch Screen Posters



PCAP Self Service Kiosks



4K Slim Bezel Interactive Touch Displays

*22" Only



Small Sized and Wide Format Displays



POS Android Advertising Displays
10" | 15"

Tablet-sized commercial displays for retail shelf edge and point of sale applications.



Power Over Ethernet (PoE)



Integrated VESA Mounting Holes



No Integrated Battery



POS Network Android PCAP Touch Screens
10" | 15"

Small-sized touch displays, ideal for meeting room booking or point-of-sale applications.



Power Over Ethernet (PoE)



Ten Point PCAP Touch Screen



Seven Colour LED Frame



Ultra-Wide Stretched Bar Displays
28" | 37"

Perfect as a banner-style endcap display in retail stores and supermarkets.



Clear HD Resolution



High Brightness



Free Network Upgrade

Ultra-Wide Stretched Bar Monitors
58:9 (76")

Perfect as a banner-style endcap display in retail stores and supermarkets.



Ultra 4K Resolution



Free Wall Mount



Optional Android Media Player



Shelf Edge Displays
23"

Grab shoppers' attention on retail shelving units with interactive eye-catching digital endcap displays.



Integrated Android Media Player



Narrow Bezel



700cd/m² Brightness

	POS Android Advertising Displays	POS Network Android PCAP Touch Screens	Ultra-Wide Stretched Bar Displays	Ultra-Wide Stretched Bar Monitors	Shelf Edge Displays
Screen Sizes	10" 15"	10" 15"	28" 37"	76" (58:9)	23"
PoE	✓	✓	✗	✗	✗
Touch Screen	✗	✓	✗	✗	✗
Brightness	250cd/m²	250cd/m²	28": 700cd/m² 37": 1,000cd/m²	500cd/m²	700cd/m²
Free Mounting Bracket	✓	✓	✓	✓	✗
Narrow Bezel	✗	✗	✓	✗	✓
Integrated Camera	✓	✓	✗	✗	✗
Seven Colour LED Frame	✓	✓	✗	✗	✗
USB Plug and Play	✓	✗	✓	✗	✗



POS Network Android PCAP Touch Screens



Shelf Edge Displays



Ultra-Wide Stretched Bar Displays



Media Players



Standalone Android Media Players

- Transform existing screens into digital signage with our powerful standalone player with scheduling software.
- USB Plug and Play
- 24/7 Commercial Use
- Power Timer



Cloud Network Android Media Players

- Transform existing screens into networked digital signage displays.
- Wireless Updates
- Android 7.1 Operating System
- Performance Enhanced Enclosure

4K Cloud Network Android Media Players

- Transform existing screens into 4K networked digital signage displays
- Wireless Updates
- Android 10 Operating System
- USB Plug and Play
- 24/7 Commercial Use



	Standalone Android Media Players	Cloud Network Android Media Players	4K Cloud Network Android Media Players
Plug and Play	✓	✓	✓
Resolution	HD: 1920x1080	HD: 1920x1080	4K: 3840x2160
Remote Updates	✗	✓	✓
Multiple Media Zones	✗	✓	✓
3.5mm Audio Output	✓	✓	✓
HDMI Output	✓	✓	✓
4 x USB Ports	✓	✓	✓
Android Version	Android 7.1	Android 7.1	Android 10
4G Upgrade Available	✗	✓	✓



Standalone Android Media Players

MODULAR SOLUTIONS

GOB and SMD Indoor DV-LED Displays

P1.8 (GOB and SMD) | P2.5 (SMD Only)

Elevate the traditional digital signage experience with flexible next-generation audience engagement.

- Captivating Image Quality
- Protective Edging
- Modular Cabinets for Any Space

High Brightness Indoor DV-LED Displays

P2.5

Redefine the traditional digital signage experience with ultra high brightness DV LED for powerful window facing displays.

- Incredible High Brightness
- Captivating Image Quality
- Optimised for Window Displays

Outdoor DV-LED Shop Fascias

P4 | P6

Rugged and bespoke outdoor digital signage solutions optimised for crystal clear distant viewing.

- Captivating Image Quality
- Outstanding High Brightness
- IP Rated Weatherproof Enclosure

ALL-IN-ONE PACKAGE SOLUTIONS

Indoor DV-LED Freestanding Totems

80"-147" (GOB)
80"-192" (SMD and High Bright)

Maximize visibility, flexibility, and engagement with our all-in-one DV-LED totem solution.

- No Bezel Freestanding Totems
- Captivating Image Quality
- Internal Locker
- Integrated Castors

Indoor Transparent DV-LED Freestanding Totems

94" | 116" | 146"

Engineered for maximum impact and flexibility, create unique showstopping window displays.

- Eyecatching Display
- High Transparency
- Outstanding High Brightness
- Modular Version Available

DV-LED Window Displays

116" | 157" | 231"

Out-of-the-box solution for seamless large-scale advertising; ideal for storefront windows.

- Optimised for Window Displays
- 2,200cd/m² Sunlight Readable
- Flexible Mounting Solutions

Fine Pitch Presentation DV-LED Video Walls

138" | 165"

The ultimate seamless video wall designed for conference and board rooms.

- Integrated Android
- HD Display
- Optimised For Meeting Rooms

Outdoor DV-LED Shop Fascias

156" | 193"

Bring your shop front to life with this all-in-one complete package outdoor DV-LED solution with incredible brightness and contrast.

- Outstanding High Brightness
- IP Rated Weatherproof Enclosure
- Mounting Bracket Included

	Indoor DV-LED	High Brightness Indoor DV-LED	Outdoor DV-LED	Indoor DV-LED Freestanding Totems	Indoor Transparent DV-LED	DV-LED All-in-One Window Displays	Fine Pitch Presentation Video Walls	Outdoor DV-LED Shop Fascias
	Modular Solutions			Package Solutions				
Pixel Pitches/ Resolution	P1.8 P2.5	P2.5	P4 P6	P1.8 P2.5	P3.9	P2.5	1920x1080	P4 P6
Sizes	640x480x31.4mm		960x960x68mm	80" 91" 107" 126" 147" 169" 192"	94" 116" 146"	116" 157" 231"	138" 165"	156" 193"
Serviceability	Front		Front and Rear	Front	Front and Rear	Front	Front	Front and Rear
Brightness	800cd/m²	2,200cd/m²	P4: 6,500cd/m² P6: 8,500cd/m²	800cd/m² / 2,200cd/m²	4,500cd/m²	2,200cd/m²	550cd/m²	P4: 6,500cd/m² P6: 8,500cd/m²
UK Stock Held	✓	✓	✓	✓	✗	✓	✗	✓
Mounting Bracket Included	✓	✓	✗	✓	✗	✗	✓	✓
Weatherproof	✗	✗	✓	✗	✗	✗	✗	✓
Protective Edge	✓	✓	✗	✓	✗	✓	✓	✗
Optional Ambient Light Sensor	✓	✓	✓	✓	✗	✓	✗	✓



Content Management System



Our Content Management System allows anyone to design and schedule content, regardless of their technical knowledge or resources. With this user-friendly interface you can use your pre-existing images, videos and websites, as you create your custom layouts, to develop content that your audience will love to engage with.

Publish your content from anywhere in the world with just the push of a button. You can also send remote commands, designate specific user privileges, schedule your content to appear at set times and dates and even preview your content from the comfort of your PC.



Why My Signage Portal?

With so many Content Management System platforms available on the market why should you choose My Signage Portal? What sets us apart from other software providers?

- 

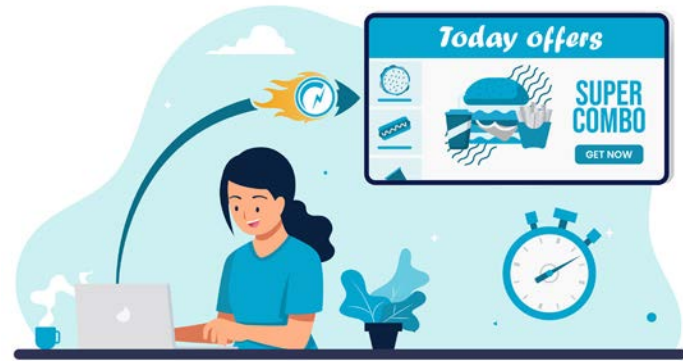
Customisation
- 

Touch Screen Creator
- 

Integrated Solutions
- 

Easy to Understand Workflow
- 

Hardware Pre-Configuration




- Rapid Publishing**

We have developed an easy "Rapid Publishing" tool that allows you to publish or schedule your content in a matter of seconds. You can now send real-time updates to your customers and ensure they always have the latest information.
- Simple Setup**

All it takes are three easy steps and your content is published in no time. Choose the orientation of your screen, upload your media and click "Publish" - it really is that easy!
- Free Digital Signage Templates**

Access a wide range of free templates with eye-catching designs and layouts that you can easily edit and make your own.



Control Your Device

When using our software in conjunction with our hardware solutions, there is no need for an external media player and, by having the media player integrated in the hardware, you have full control of the screen itself.

Schedule Playlists

Once your playlist is created, you can choose to either publish your content immediately or schedule times and dates for your content to be displayed. This allows you to display what you want and when you want, having complete control of what your customers are seeing.

Global Remote Commands

Not only can you update the content on your displays remotely from anywhere in the world, you can also send commands to reboot your screens, format the internal memory, stop and start content playback, rotate the orientation, and so much more! You can have full control of your screens no matter where you are.

Create Dynamic Multi Zone Layouts

Design your own unique layouts, in either landscape or portrait orientation, with different zones and layers for your images, videos, text and live webpages. Let your creativity flow and create dynamic and show-stopping content for your customers.

Backgrounds

Set an image or a colour to frame your media zones.

Images

Multiple images playing in a continuous rolling loop.

Static Text

Input custom text values and edit the font, colour and size of your text.

Videos


Multiple videos playing in a continuous rolling loop.

Time

Display the time in a variety of formats, sizes and in whatever colour you want.

Date

Display the date in a variety of formats, sizes and in whatever colour you want.



Logo

Brand your layout with your logo, which will stay on top of all other zones.

Office Documents & PDF's

Display PDF files alongside Microsoft Word, Excel and PowerPoint files.

Websites

Display a live webpage such as a social media page or live web feed.

Image Overlay

Add an image with transparent sections as a top layer to give the other media zones a frame.

Weather Widget

Display a real time weather forecast for up to the next three days.

Scrolling Text

Display a ticker tape message or live RSS feed. From here you can adjust the font, size, colour, speed and direction of the text.

Content Management System



Multi Screen Synchronisation

Because we manufacture a wide range of hardware solutions in conjunction with My Signage Portal, we were able to fully optimise our software and minimise the perceived lag time of synchronisation to less than 0.042 seconds! This allows you to create content that flawlessly flows between multiple screens, creating the ultimate dynamic experience.



User Management

Create and manage unlimited amount of user accounts and set privileges for each user or user group. Not only can you set how much access your users have to certain functions and limit them in other areas, but you can also limit the access to specific screens, giving you complete control of what different users can do.



Reports / Logs

Keep track of every action performed on the CMS from users, screens or players. From seeing the current status of a screen to checking who last updated a player; you can even access content playback reports that are accurate down to the second when proof of play is needed.



Customise the UI

Change the logo displayed in the top corner and choose a colour scheme based on your company's branding to make this software your own. That's right, you can fully customise My Signage Portal's software interface to your company's style for a fully personalised experience.

What Devices Can Run My Signage Portal?

This software was developed in conjunction with our wide range of digital signage hardware products. From high brightness displays to PCAP touch screens, DV-LED video walls and multiple outdoor ranges, we offer all-in-one solutions that ensure an easy and hassle-free process. All of our displays can be in use 24/7, and are paired with a 3-year warranty and lifetime technical support. Our goal is to make digital signage accessible to everyone so we offer support to our partners and their customers every step of the way.



My Signage Portal Triggers

Our CMS includes Trigger features that take digital signage beyond scheduled content, enabling displays to respond intelligently to real-world interactions and events. These triggers make signage more engaging, dynamic, and personalised, helping you deliver experiences that capture attention and drive action.

Ways you can use CMS triggers:

- Touch & Learn: Use a touch screen to instantly trigger content on another display.
- Lift & Learn: Integrate RFID sensors to switch content when products are lifted.
- Presence, Light & Lidar Sensors: Trigger content through movement and environment detection.
- Cloud API Triggers: Web-based commands that can remotely control content.

By incorporating triggers into your projects, you can create smarter, more immersive digital signage experiences, improving engagement, boosting customer interaction, and elevating the impact of every display.

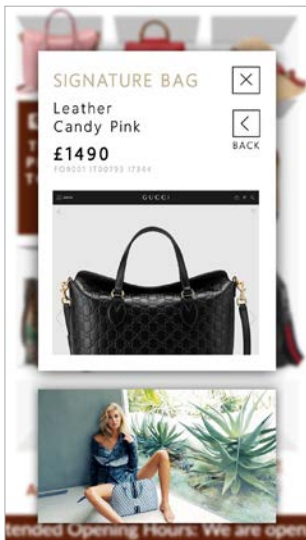
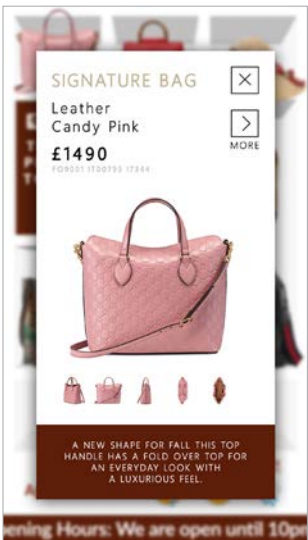
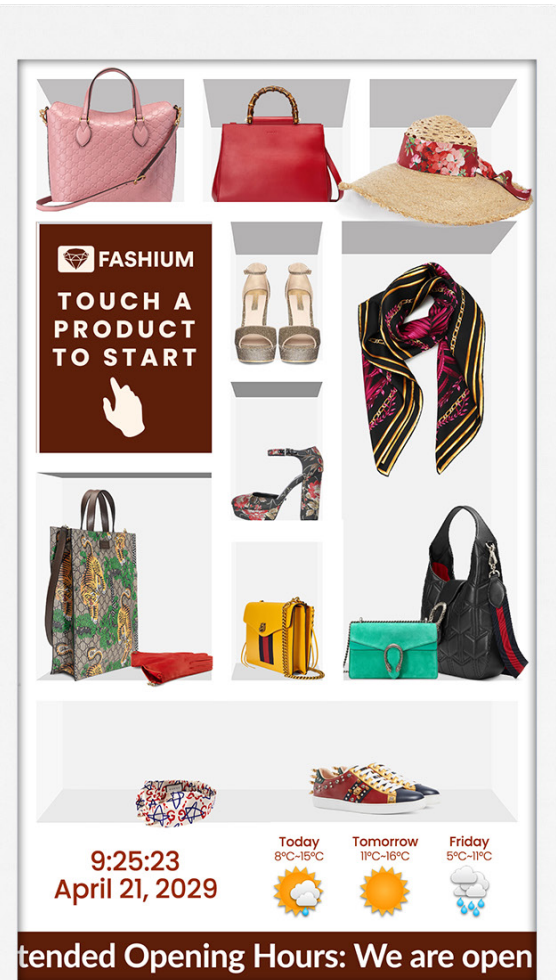


Interactive Experiences With Interactive Content

With My Signage Portal you can create interactive experiences for your customers with no coding or technical knowledge necessary. To make this even easier, both touch and non-touch options are in the same system, giving you the flexibility of upgrading your content to interactive without the need to learn a new piece of software. Simple and easy for both you and your customers.

Create Touch Screen Playlists

Design your own unique touch screen content with our visual builder, use buttons to weave your pages together as you fill pages with your images, videos, galleries and interactive webpages. You can even launch Android apps at the touch of a button from within your playlist. Deploy your touch content to anywhere in the world and experience interaction on a whole new level.



Buttons

Link your different pages together and trigger a host of different actions. Use buttons to prompt videos to start, launch websites, link to different pages or playlists and even launch Android compatible applications; all this without having to write any code.

Apps

If you have an Android compatible app that you would like to use, you can integrate it into your touch screen content. It can then be launched within the playlist with the touch of a button.

Screensavers

You can set a 'timeout' period for your content; if the screen isn't touched during this period you can assign a separate playlist to display automatically. This can include images, videos, webpages and even RSS feeds.

Media Galleries

Create user friendly galleries of your image and video content. Personalise your carousel with the length of each slide and the transition effect.

Webpages

Incorporating websites and webpages into your touch screen content opens up a whole new world of opportunities. Any complicated functions that can't be achieved by using the standard tools of our CMS can be achieved by creating a webpage.